
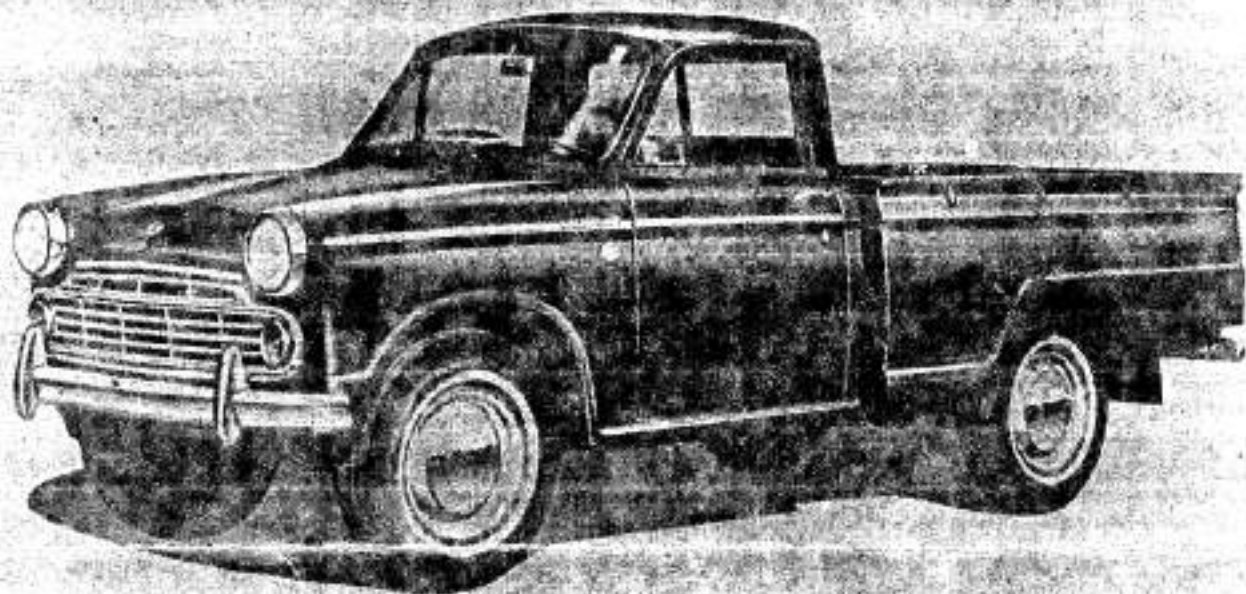


COLLISION ESTIMATING SHEET*

FOR  DATSUN • MODEL L320
PICKUP 1962-1964

DATSUN



ORDER FROM:

PART NO. 99999-10506

REVISION DATE: November 15, 1972

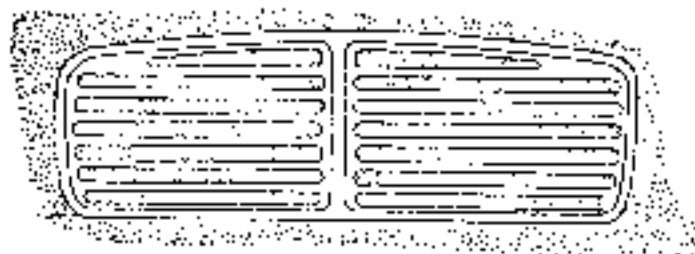
* ORDER BY PART NO. WHEN ORDERING ADDITIONAL COPIES

The prices shown in this schedule are the factory suggested list prices and may not represent the actual list prices on which your net price is based. Contact your DATSUN dealer for your price schedule. Prices subject to change without notice.

WWW.THE620.COM
THANKS KENBAGBY

Prepared by National Parts Department
Nissan Motor Corporation in U.S.A.

SERIES IDENTIFICATION
BY GRILL DESIGN



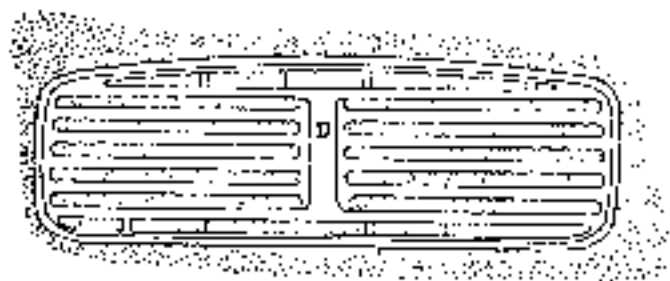
1st SERIES*



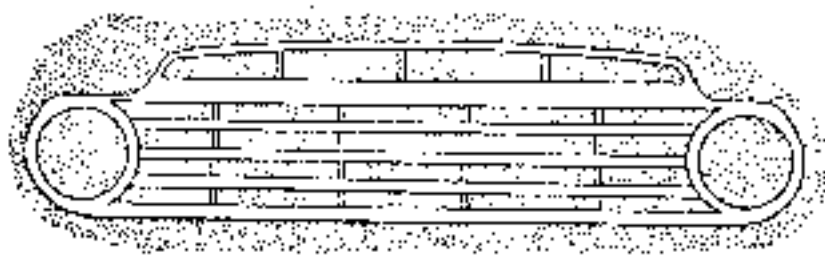
INTERCHANGEABLE



2nd SERIES



3rd SERIES



4th SERIES

*NOTE: THE 1ST SERIES GRILL HAS BEEN DISCONTINUED AND THE 2ND SERIES GRILL IS BEING SUBSTITUTED.

| <u>PART NUMBER</u> | <u>DESCRIPTION</u> | <u>SUGGESTED UNIT LIST PRICE</u> |
|--------------------|--|----------------------------------|
| FRONT | | |
| 62652-08703 | Front Bumper Face Bar | 20.43 |
| 62663-09400 | Bumper Guard | 4.00 |
| 62679-08701 | Right Front Bumper Brkt. | 2.68 |
| 62680-08701 | Left Front Bumper Brkt. | 2.68 |
| 62662-04100 | Bumper Bolt | .23 - 181.301 |
| 62302-08800 | Chrome Grill, 1st and 2nd Series | 21.94 |
| 62302-08801 | Chrome Grill, 3rd Series | 21.94 |
| 62302-08802 | Chrome Grill, 4th Series | 21.94 |
| 62610-08700 | Small Lower Skirt | 2.88 |
| 62603-08701 | Gravel Guard, All Series | 3.98 |
| 62604-08700 | Lower Skirt | 3.93 |
| 62500-08801 | Grill Panel, 1, 2 and 3 Series | 27.60 |
| 62500-08802 | Grill Panel, 4th Series | 27.60 |
| 21400-08702 | Radiator Assembly, All Series | 64.80 - 220.00 |
| 21061-07200 | Front Fan Blade | 1.93 |
| 21062-07200 | Rear Fan Blade | 1.93 |
| 26010-04201 | Head Lamp Assembly, Rt. or Lt. | 15.72 |
| 26041-04150 | Head Light Door | 2.28 - 11.95 |
| 26017-18010 | Seal Beam Retainer | 2.02 - 11.77 |
| 26120-09403 | Parking Lamp Assembly, 1st, 2nd & 4th Series, Amber | 5.00 |
| 26121-09402 | Parking Lamp Lens and Door, Amber, 1st, 2nd and 4th Series | 1.67 - 7.00 |
| 26120-08800 | Right Parking Lamp Assembly, 3rd Series | 5.00 |
| 26125-08800 | Left Parking Lamp Assembly, 3rd Series | 5.00 |

FRONT (CONTINUED)

| <u>PART NUMBER</u> | <u>DESCRIPTION</u> | <u>SUGGESTED UNIT LIST PRICE</u> |
|------------------------------|--|----------------------------------|
| 26121-08800 | Right Parking Light Lens, 3rd Series | 1.12 |
| 26126-08800 | Left Parking Light Lens, 3rd Series | 1.12 |
| 63100-08700 | Right Front Fender, 1st and 2nd Series | 40.52 |
| 63801-08050 | Right Front Fender Moulding 1/2" wide | 2.68 |
| 63100-08802 | Right Front Fender, 3rd Series | 45.05 |
| 63100-08808 | Right Front Fender, 4th Series | 45.05 |
| 63801-04151 | Right Front Fender Moulding 1" wide | 3.15 |
| 63805-04400 | Fender Emblem "DATSUN 1200" | 1.72 - 9.47 |
| 63819-07400 | Fender Emblem "60 HP" | 1.47 - 5.10 |
| 66419-08800 | Right Front Lower Inner Panel | 10.98 |
| 66401-08801 | Right Front Hood Ledge | 12.23 |
| 66301-08800 | Fender Mirror | 4.80 - 19.50 |
| 4/6 301-13200 63101-08700 | Left Front Fender, 1st and 2nd Series | 40.52 |
| 63802-08050 | Left Front Fender Moulding 1/2" wide | 2.68 |
| 63101-08804 | Left Front Fender, 3rd Series | 45.05 |
| 63101-08808 | Left Front Fender, 4th Series | 45.05 |
| 63802-04151 | Left Front Fender Moulding 1" Wide | 3.15 |
| 63805-04400 | Fender Emblem, "DATSUN 1200" | 1.72 - 9.47 |
| 63819-07400 | Fender Emblem, "60 HP" | 1.47 - 5.10 |
| 66420-08800 | Left Front Lower Inner Panel | 10.98 |

FRONT (CONTINUED)

| <u>PART NUMBER</u> | <u>DESCRIPTION</u> | <u>SUGGESTED UNIT LIST PRICE</u> |
|--------------------|--------------------------------|--|
| 66402-08801 | Left Front Hood Ledge | 12.23 |
| 96301-08800 | Fender Mirror | 4.80 |
| 65100-04130 | Front Hood Panel | 42.17 → 182.15 |
| 65812-08700 | Hood Emblem | 1.83 → 1.71 |
| 65809-04101 | Hood Moulding | 2.02 → |
| 65405-04100 | Hood Hinge, Right or Left | 1.55 |
| 65601-10600 | Hood Lock Kit, Upper Half Only | 1.52 → 4.18 |
| 65642-04100 | Safety Catch | .35 |
| 72613-08800 | Windshield Glass | 67.10 → 151.99 |
| 72610-08702 | Rubber Frame | 7.37 → 84.08 |
| 48400-08700 | Steering Wheel | 20.91 → 132.71 |

REAR

| | | |
|-------------|----------------------------|---------------|
| 85003-08800 | Rear Bumper, Right or Left | 14.77 |
| 93451-08800 | Rubber Bumper, Tail Gate | .18 |
| 85205-08800 | Right Inner Bumper Bracket | 4.73 |
| 85207-08801 | Right Outer Bumper Bracket | 4.26 → 17.04 |
| 85206-08800 | Left Inner Bumper Bracket | 4.73 |
| 85208-08801 | Left Outer Bumper Bracket | 4.26 |
| 62662-04100 | Bumper Bolt | .23 → 1.34 |
| 26510-08700 | License Lamp Assembly | 4.88 |
| 26511-03900 | Lens, License Lamp | 1.27 |
| 26512-03900 | Cover, License Lamp | 1.15 |
| 96204-03500 | Support, License Bracket | .55 |
| 96205-05200 | License Bracket | 1.35 |
| 26550-08701 | Right Tail Lamp Assembly | 10.65 → 37.03 |

REAR (CONTINUED)

| <u>PART NUMBER</u> | <u>DESCRIPTION</u> | <u>SUGGESTED UNIT LIST PRICE</u> |
|--------------------|-----------------------------|--|
| 26555-08701 | Left Tail Lamp Assembly | 10.65 + 37.63 |
| 26557-08700 | Rim Tail Lamp Right or Left | 3.07 - 12.62 |
| 26526-08701 | Right Inner Tail Light Lens | 1.17 - 4.37 |
| 26536-08700 | Right Outer Tail Light Lens | 1.67 - 4.19 |
| 26521-08701 | Left Inner Tail Light Lens | 1.17 - 4.37 |
| 26531-08700 | Left Outer Tail Light Lens | 1.67 = 4.42 |
| 26560-35200 | Reflector, Plug in Type | .97 - 4.36 |
| 26560-08700 | Reflector, Screw in Type | 1.21 ----- |

RIGHT SIDE - CAB

| | | |
|-------------|--|-------------------------|
| 80100-08030 | Right Door Panel | 59.38 |
| 80801-08050 | Right Door Moulding 1/2" Wide | 2.55 ----- |
| 80801-04151 | Right Door Moulding 1" Wide | 2.55 ----- |
| 80006-09401 | Right Door Sash | 20.40 |
| 80006-08701 | Right Door Sash, 4th Series | 20.40 - |
| 80675-04100 | Outside Door Handle | 4.07 - ----- |
| 80600-04101 | Right Cylinder Lock and Key, 1st and 2nd Series | 1.62 ----- |
| 80600-09401 | Right Cylinder Lock and Key, 3rd and 4th Series | 2.63 ----- |
| 80400-09400 | Upper Right Door Hinge | 2.57 ----- |
| 80402-04100 | Lower Right Door Hinge | 2.57 ----- |
| 80410-09100 | Check Link | .62 ----- |
| 80249-09451 | Right Vent Glass Frame | 4.90 - 18.25 |
| 80249-08750 | Right Vent Glass Frame, 4th Series | 4.90 ----- |
| 80286-04200 | Vent Glass | 2.40 ----- |
| 80286-08800 | Vent Glass, 4th Series | 2.40 ----- |

RIGHT SIDE (CONTINUED)

| <u>PART NUMBER</u> | <u>DESCRIPTION</u> | <u>SUGGESTED UNIT LIST PRICE</u> |
|--------------------|--------------------------------------|--|
| 82206-34200 | Right Vent Lock Handle | 1.73 |
| 80206-32202 | Right Vent Lock Handle, 4th Series | 1.77 |
| 80285-09400 | Glazing Rubber, Vent Glass | .33 |
| 80242-04100 | Weatherstrip, Vent Glass | 1.78 |
| 80242-08700 | Weatherstrip, Vent Glass, 4th Series | 1.82 |
| 80308-04100 | Glass, Door Window | 6.45 |
| 80302-04100 | Glass, Channel | 1.02 |
| 80312-04100 | Rubber, Glass Channel | .20 |
| 80700-04100 | Assembly Window Regulator | 3.88 |
| 80500-09400 | Assembly, Lock and Remote Control | 7.78 |
| 80502-09400 | Lock Only | 4.98 |
| 66103-09400 | Right Hinge Pillar | 4.62 |
| 76400-08700 | Right Rocker Panel | 4.62 |
| 74930-08700 | Scuff Plate, Aluminum | 2.62 |
| 76500-08700 | Right Lock Pillar | 6.95 |

LEFT SIDE - CAB

| | | |
|-------------|---|-------|
| 80101-08030 | Left Door Panel | 59.38 |
| 80801-08050 | Left Door Moulding 3/4" Wide | 2.55 |
| 80801-04151 | Left Door Moulding 1" Wide | 2.55 |
| 80007-09401 | Left Door Sash | 20.40 |
| 80007-08701 | Left Door Sash, 4th Series | 20.40 |
| 80675-04100 | Outside Door Handle | 4.07 |
| 80601-04100 | Left Cylinder Lock and Key, 1st and 2nd Series | 1.62 |
| 80601-09401 | Left Cylinder Lock and Key, 3rd and 4th Series | 2.63 |
| 80401-04100 | Upper Left Door Hinge | 2.57 |
| 80403-04100 | Lower Left Door Hinge | 2.57 |

LEFT SIDE (CONTINUED)

| <u>PART NUMBER</u> | <u>DESCRIPTION</u> | <u>SUGGESTED UNIT LIST PRICE</u> |
|--------------------|---|--|
| 80410-09100 | Check Link | .62 |
| 80250-09451 | Left Vent Glass Frame | 4.90 |
| 80250-08750 | Left Vent Glass Frame, 4th Series | 4.90 |
| 80286-04200 | Vent Glass | 2.40 |
| 80286-08800 | Vent Glass, 4th Series | 2.40 |
| 82207-34200 | Left Vent Lock Handle | 1.73 |
| 80207-32202 | Left Vent Lock Handle, 4th Series | 1.77 |
| 80285-09400 | Glazing Rubber, Vent Glass | .33 |
| 80243-04100 | Weatherstrip, Vent Glass | 1.78 - 10/10 - 25 |
| 80243-08700 | Weatherstrip, Vent Glass, 4th Series | 1.82 |
| 80308-04100 | Glass, Door Window | 6.45 |
| 80302-04100 | Glass, Channel | 1.02 |
| 80312-04100 | Rubber, Glass Channel | .20 |
| 80701-04100 | Assembly, Window Regulator | 3.88 |
| 80501-09400 | Assembly, Lock and Remote Control | 7.78 |
| 80503-09400 | Lock Only | 4.98 |
| 66104-09400 | Left Hinge Pillar | 4.62 |
| 76403-08700 | Left Rocker Panel | 4.62 |
| 74930-08700 | Scuff Plate Aluminum | 2.62 |
| 76501-08700 | Left Lock Pillar | 6.95 |
| <u>CAB</u> | | |
| 60000-08853 | Cab Shell Complete with Doors, Fenders, Hood, Glass, Seats & Trim, and Fully wired with Instru- ment Panel; 3rd Series | 507.89 |

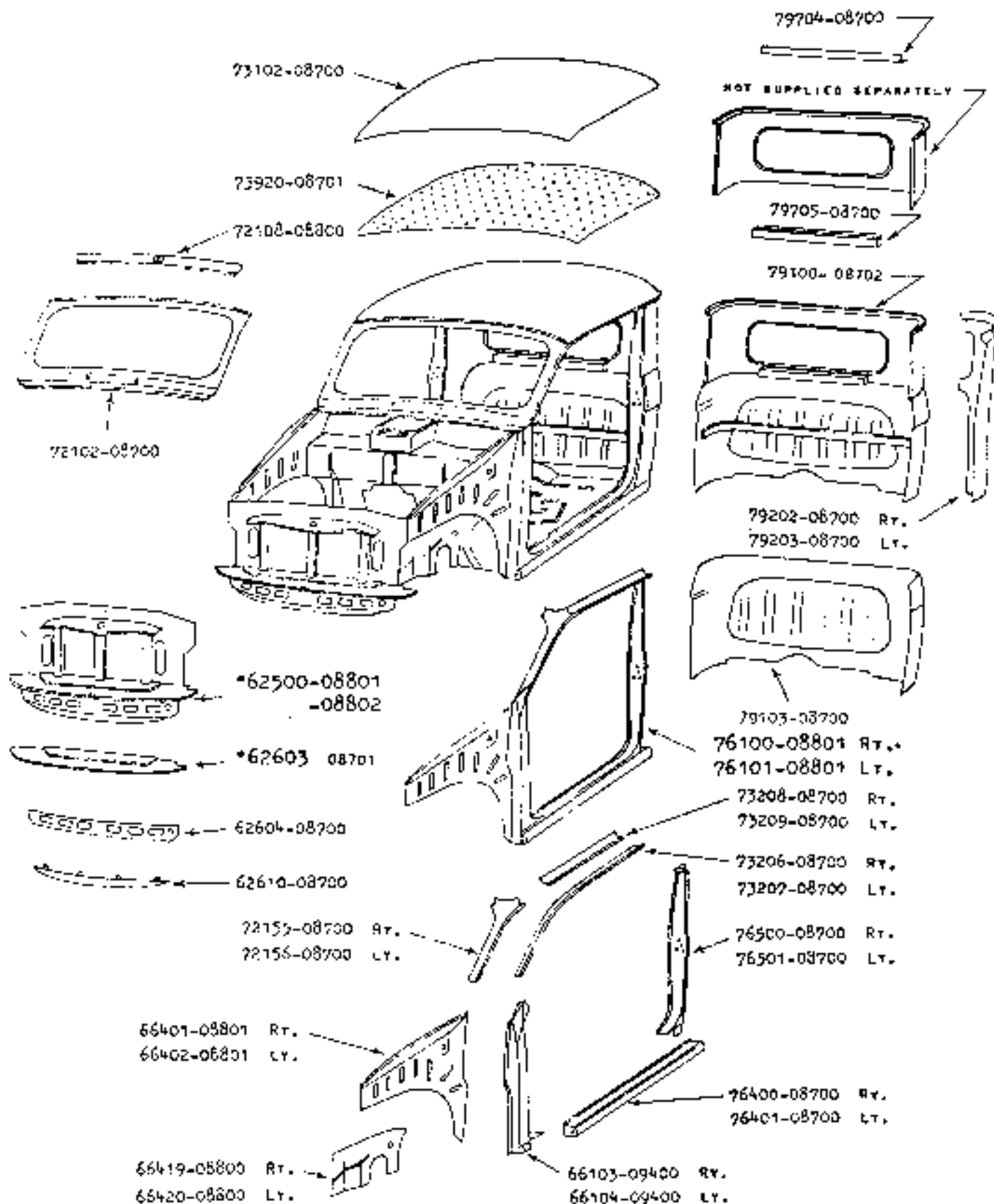
| <u>PART NUMBER</u> | <u>DESCRIPTION</u> | <u>SUGGESTED UNIT LIST PRICE</u> |
|--------------------|--|--|
| 60010-08853 | Cab Shell with Doors, Fenders & Hood; 3rd Series | 533.27 |
| 73102-08700 | Turret Top | 16.72 |
| 73206-08700 | Right Drip Rail | 2.15 |
| 73207-08700 | Left Drip Rail | 2.15 |
| 73920-08701 | Headliner | 9.60 |
| 72102-08700 | Windshield Outer Panel | 12.35 |
| 72108-08800 | Front Roof Header Rail | 3.95 |
| 76100-08801 | Right Side Frame, Assembly, Cab | 20.46 |
| 76101-08801 | Left Side Frame, Assembly, Cab | 20.46 |
| 73208-08700 | Right Inner Roof Rail | .93 |
| 73209-08700 | Left Inner Roof Rail | .93 |
| 79704-08700 | Rear Inner Roof Rail | 1.83 |
| 72155-08700 | Right Inner Windshield Pillar | 3.97 |
| 72156-08700 | Left Inner Windshield Pillar | 3.97 |
| 79202-08700 | Right Rear Corner Inner Panel | 4.12 |
| 79203-08700 | Left Rear Corner Inner Panel | 4.12 |
| 79100-08702 | Back Panel Assembly | 41.00 |
| 79103-08700 | Lower Back Panel | 28.32 |
| 79739-08800 | Rear Window Glass | 9.00 |
| 79716-08703 | Rubber Frame, Rear Window | 4.15 |
| <u>BOX</u> | | |
| 93001-08857 | Rear Box Assembly | 250.71 |
| 93309-08831 | Right Side Panel | 30.00 |
| 93310-08831 | Left Side Panel | 30.00 |
| 93400-08730 | Tail Gate-Plain | 30.75 |

BOX (CONTINUED)

| <u>PART NUMBER</u> | <u>DESCRIPTION</u> | <u>SUGGESTED UNIT LIST PRICE</u> |
|-------------------------|-------------------------------------|----------------------------------|
| 93400-08730 | Tail Gate - "DATSUN" | 30.75 |
| 93427-08800 | Tail Gate Hinge | 1.20 |
| 93431-05001 | Right Tail Gate Lock Handle | 2.05 |
| 93432-05001 | Left Tail Gate Lock Handle | 2.05 |
| 93417-08750 | Tail Gate Chain | 2.58 |
| <u>MISCELLANEOUS</u> | | |
| 40300-20501 | Road Wheel | 17.08 - 17.00 |
| 40315-32200 | Hub Cap | 3.60 |
| <u>SUSPENSION PARTS</u> | | |
| 51010-08700 | Front Cross Member | 6.54 |
| 54611-07400 | Front Stabilizer Bar | 9.63 |
| 40010-07250 | Right Front Spindle | 27.00 |
| 54710-08700 | Right Front Spindle Support | 11.28 |
| 40010-07250 | Left Front Spindle | 27.00 |
| 54711-08700 | Left Front Spindle Support | 11.28 |
| 40022-14825 | King Pin Repair Kit, Right & Left | 8.62 <i>1.50, 8.1</i> |
| 40052-08700 | Steering Arm Right Hand | 6.18 |
| 40053-08700 | Steering Arm Left Hand | 6.18 |
| 54533-04300 | Upper "A" Arm, Right or Left, Front | 3.50 |
| 54543-04300 | Upper "A" Arm, Right or Left, Rear | 3.50 |
| 54536-10600 | Spindle, Upper "A" Arm, Inner | 2.72 <i>1.25, 2.47</i> |
| 54521-04300 | Outer Spindle, Upper "A" Arm | .27 <i>2.64</i> |
| 54507-10600 | Bush Upper "A" Arm | 1.40 <i>7.76</i> |
| 54529-07400 | Lower "A" Arm, Right Hand | 9.28 |
| 54530-07400 | Lower "A" Arm, Left Hand | 9.28 |
| 54419-04300 | Spindle, Lower "A" Arm, Inner | 3.77 |

SUSPENSION PARTS (CONTINUED)

| <u>PART NUMBER</u> | <u>DESCRIPTION</u> | <u>SUGGESTED UNIT LIST PRICE</u> |
|--------------------|----------------------------------|--|
| 54502-08700 | Spindle, Outer, Lower "A" Arm | 2.27 |
| 56110-04325 | Shock Absorber Kit, Front | 7.08 |
| 54705-08700 | Bracket, Tension Rod, Right Side | 1.58 |
| 54706-08700 | Bracket, Tension Rod, Left Side | 1.58 |



*SEE LISTING

L-320-UP CAB SHELL DETAIL